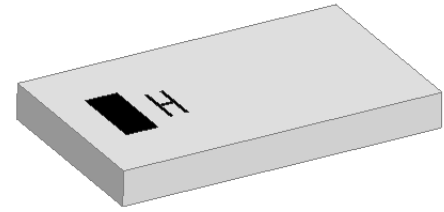


UWB 8060 Chip Antenna: ANT8060R55002KM1

Application:

UWB indoor location, Smart Key, etc...



Features

SMD, high reliability, ultra compact, Omni-directional...

Part number

ANT 8060 R 5500 1K M1
(1) (2) (3) (4) (5)

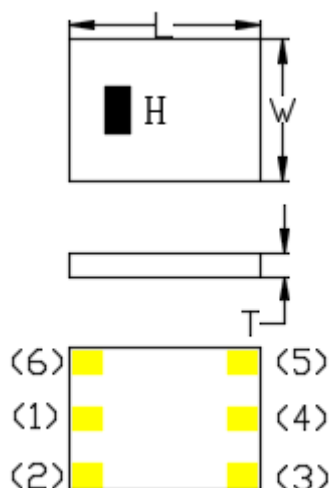
(1) Size Code	8.0x6.0mm
(2) Packing	Tape and reel
(3) Frequency	5500MHz
(4) Packing Number	1K
(5) Code	M1

Electrical Specification

Working Frequency Range	3500~8000 MHz
Peak Gain	3.5 dBi (Typ.)
Impedance	50 Ohm
VSWR	3 (Max)
Polarization	Linear
Azimuth Beamwidth	Omni-directional
Operation Temperature(°C)	-40 ~85°C

The specification is defined on HEK EVB.

Dimension and Terminal Configuration



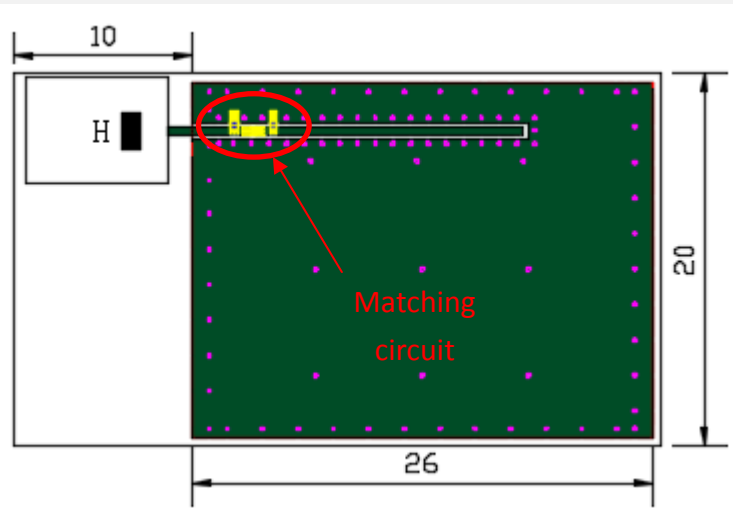
Dimension (mm)	
L	8.0±0.15
W	6.0±0.15
T	1.0±0.10

No.	Terminal Name
1	Feeding
2,3,4,5,6	Soldering

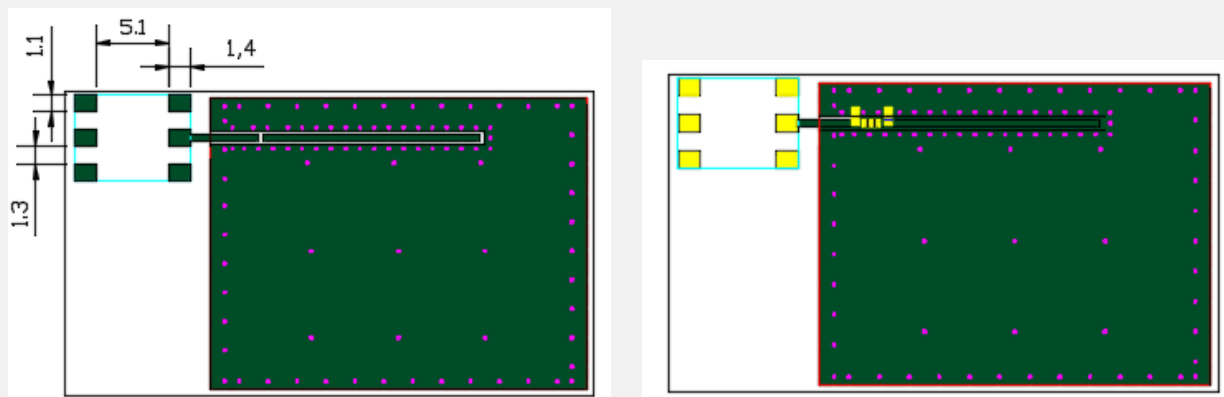
UWB 8060 Chip Antenna: ANT8060R55002KM1

Evaluation Board Reference

PCB Dimension




Antenna Layout Reference



Unit : mm

 : Chip Antenna

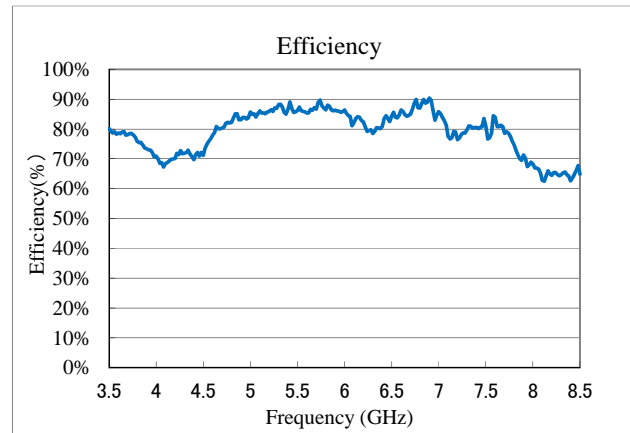
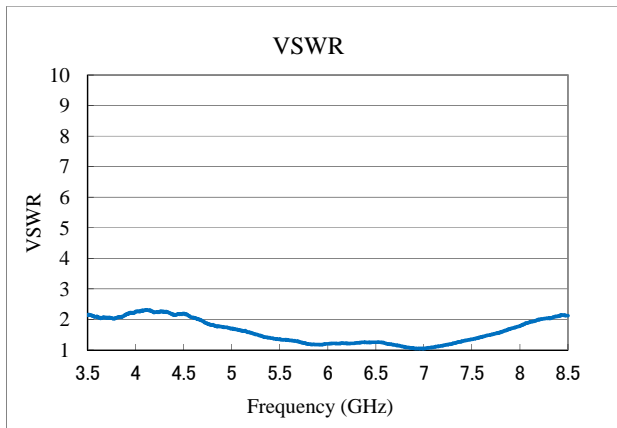
 : Land Pattern

UWB 8060 Chip Antenna: ANT8060R55002KM1

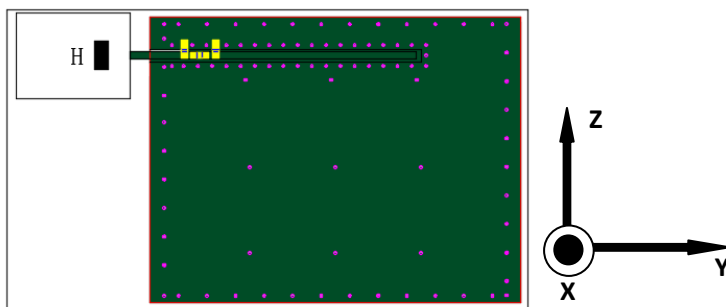
Electrical Characteristics

Return Loss & Radiation

VSWR&Efficiency

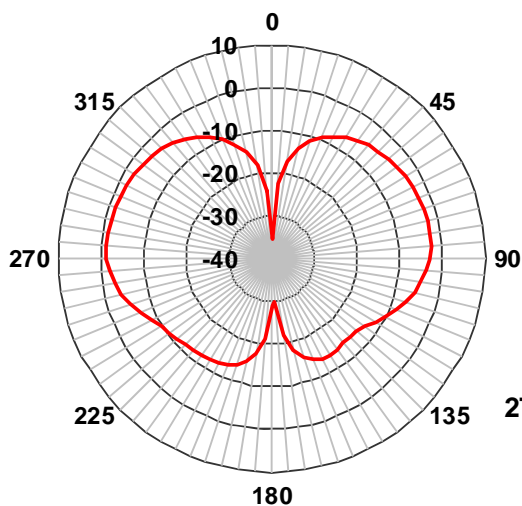


Radiation Pattern

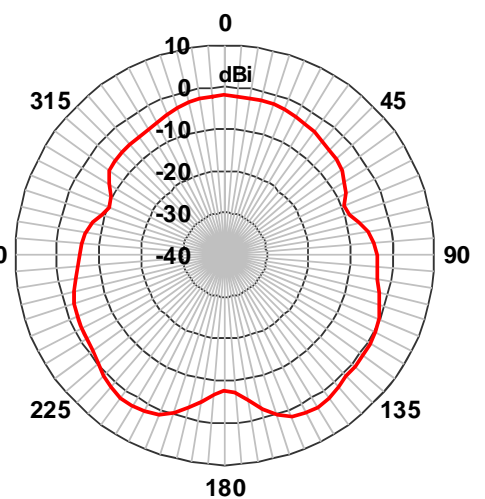
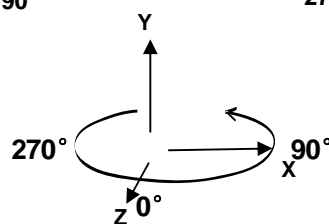


Frequency=5500MHz

ZX-Plane



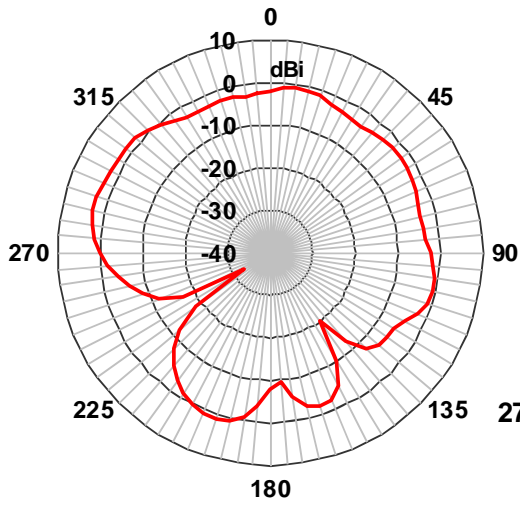
Horizontal Polarization



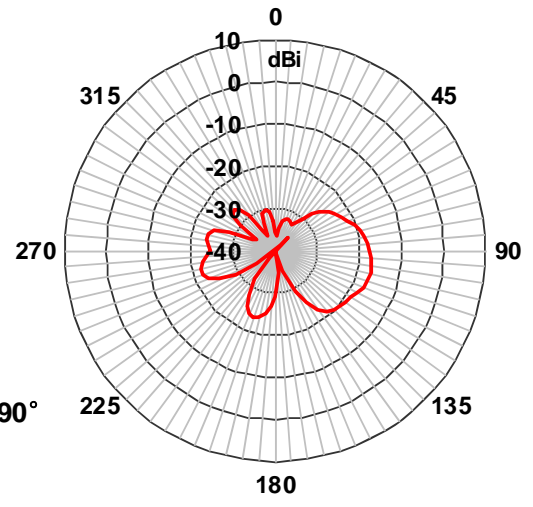
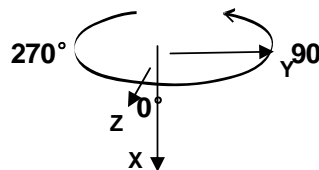
Vertical Polarization

UWB 8060 Chip Antenna: ANT8060R55002KM1

ZY-Plane

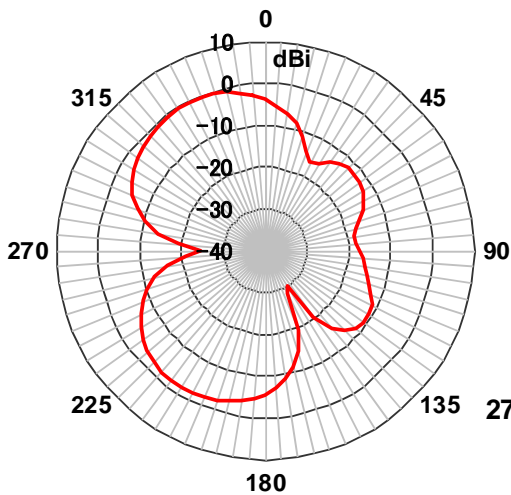


Horizontal Polarization

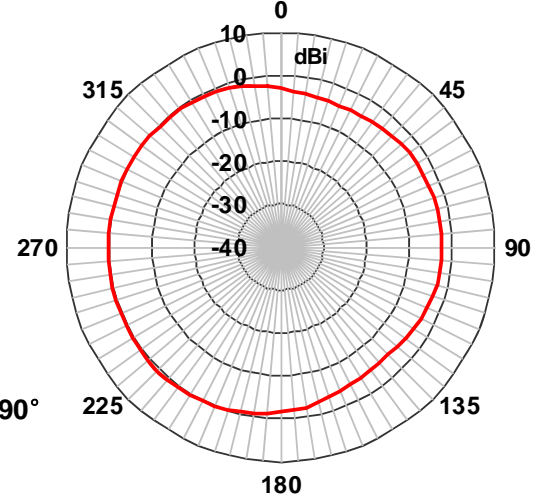
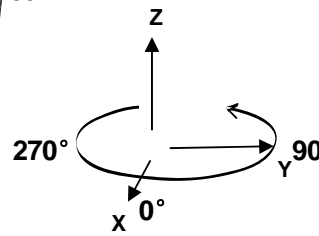


Vertical Polarization

XY-Plane



Horizontal Polarization



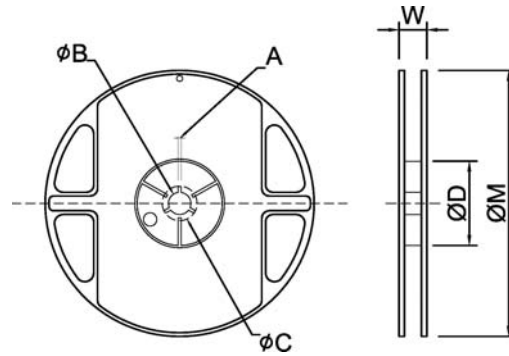
Vertical Polarization

UWB 8060 Chip Antenna: ANT8060R55002KM1

Taping Specifications

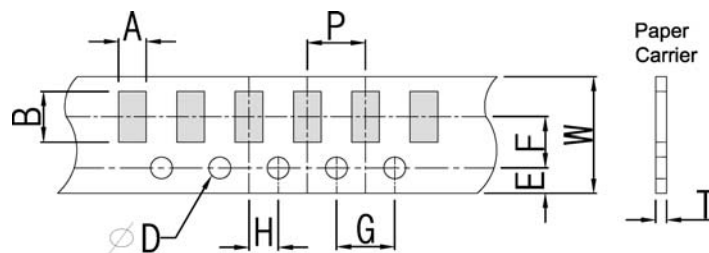
Reel and Taping Specification

Reel Specification



TYPE	SIZE	A	φ B	φ C	φ D	W	φ M	
8060	13"	2K/Reel	2.0±0.5	13.0±1.0	21±1.0	67±1.0	20.5±2.0	178±2.0

Taping Specification

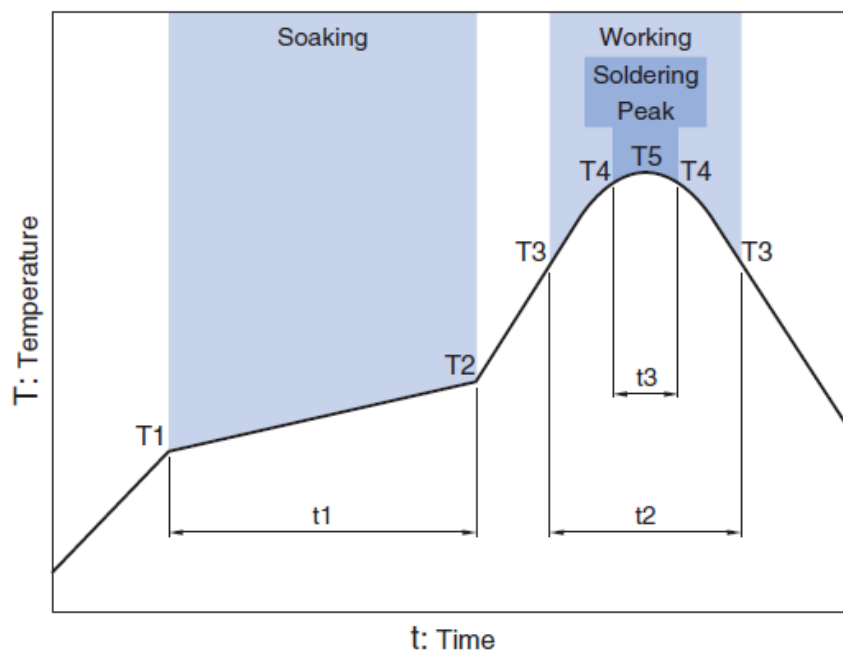


Packaging	Type	A	B	W	E	F	G	H	T	φD	P
Paper Type	8060	6.30±0.20	8.30±0.20	16.0±0.20	1.75±0.10	7.5±0.05	4.0±0.10	2.0±0.05	0.30±0.10	1.50 ^{+0.10} ₋₀	12±0.1

UWB 8060 Chip Antenna: ANT8060R55002KM1

Recommended Reflow Profile

Pb free solder



Soaking		Working		Soldering		Peak	
Temp.	Time	Temp.	Time	Temp.	Time	Temp.	
T1	T2	t1	T3	t2	T4	t3	T5
150°C	180°C	60 to 120sec	230°C	more than 30sec	247 to 253°C	within 10sec	260°C Max.